

# Notes on Functions

What is the difference between a function and a relation?

Function:

---

Relation:

---

What does it mean for a function to be increasing?

---

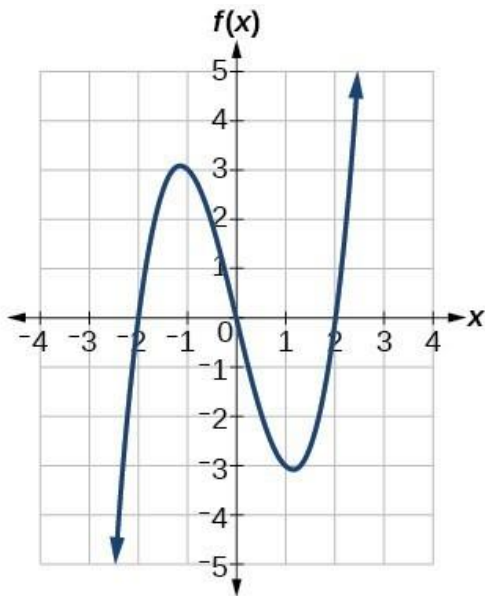
What does it mean for a function to be decreasing?

---

What is the domain of a graph? What about the range?

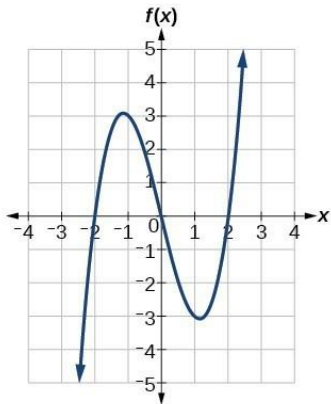
---

Identify the maximum and minimum of the function on the graph below. What is the domain and range of the function?

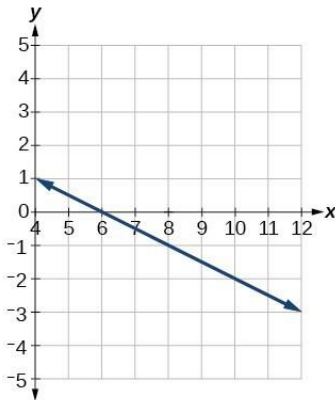


(a)

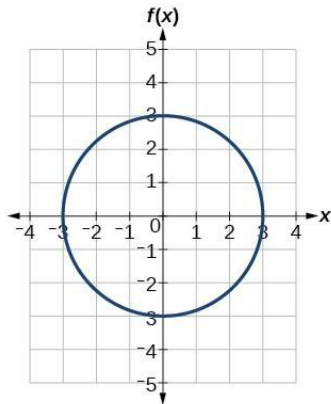
Identify whether the graphs and tables below are functions. If it is not a function, state why



(a)



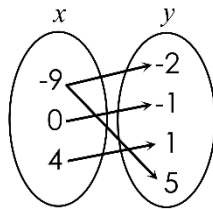
(b)



(c)

$x$	$y$
-3	-4
-1	-2
2	1
5	4

(d)



(e)

$\{(-7, 2), (-5, 2), (-2, 8), (0, 8)\}$

(f)

(a) Function? Yes No

Why? \_\_\_\_\_

(b) Function? Yes No

Why? \_\_\_\_\_

(c) Function? Yes No

Why? \_\_\_\_\_

(d) Function? Yes No

Why? \_\_\_\_\_

(e) Function? Yes No

Why? \_\_\_\_\_

(f) Function? Yes No

Why? \_\_\_\_\_